

# NWOOSH WINTER VACATION CARE

**FOLLOW US  
ON FACEBOOK FOR  
REGULAR UPDATES**



**"THE COLOUR OF WINTER IS  
IN OUR IMAGINATION"**

**- TERRI GUILLEMETS**



**GET EXCITED!!!**

We have so many fun & exciting experiences planned & cannot wait to share them all with you! See below for our Winter Vacation Care Schedule, FAQs & key terms & conditions.



Don't forget you can check out our Kinderloop online portal for Daily Diaries, Lost Property Notifications, Incident Reports, & Individual Childrens' Snapshots!

# KEY INFORMATION

**WHO WE ARE:** Normanhurst West OSHC

**HOW TO CONTACT US:**

✉ oosh@nwoosh.com.au

📞 (02) 9484 4412



**LOCATION & OPERATING HOURS**

📍 Cnr Dartford & Sefton Rds, Thornleigh 2120 NSW

🕒 We are open from 7am - 6:15pm

**Below are a few highly helpful details to support you through our enrolment & booking process!**

**HOW AND WHERE DO I ENROL & BOOK?**

Online via our website: [www.normanhurstwestoshc.com.au](http://www.normanhurstwestoshc.com.au)

**WHERE DO I FILL OUT ANY PERMISSION FORMS?**

Permissions are completed **ONLINE** while booking!

**WHAT IS AN EARLY BIRD BOOKING?**

Early Bird Bookings are discounted bookings that are available up until midnight **24th June 2022**. All bookings from **25th June 2022** onwards will be charged at the regular rate & are subject to availability. → **Please note that these early bird bookings are subject to the same cancellation policy as our regular bookings.**

**CANCELLATIONS**

For planning purposes, after **24th June 2022**, no cancellations will be accepted. We greatly appreciate your understanding in this matter.

# WHAT'S HAPPENING

**MONDAY 4TH JULY**

## **Putt Putt Golf**

(excursion)

### **LET'S HIT THE GREEN!**

Today's excursion we explore our local community's offerings, heading to Thornleigh Golf Centre for a 36 hole mini golf adventure!

**Early Bird Rate \$ 82**

**Regular Rate \$ 87**



**TUESDAY 5TH JULY**

## **Taronga Zoomobile**

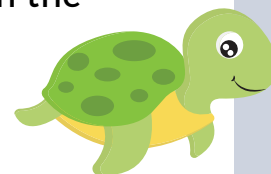
(special visitor)

### **THERE'S NOTHING BETTER THAN A TRIP TO THE ZOO...OR IS THERE?**

Taronga is coming to NWOOSH!!! We are so excited to meet these incredible animals and learn all about these creatures from the Taronga Zookeepers!

**Early Bird Rate \$ 76**

**Regular Rate \$ 81**



**WEDNESDAY 6TH JULY**

## **Ball Sports**

\*lunch provided

### **THROW IT, SWING IT, & BOUNCE IT!**

Children have loved our previous Sport Skills Workshops, where our team lead the children in getting match fit for all your children's favourite ball sports!

**Early Bird Rate \$ 55**

**Regular Rate \$ 60**



**THURSDAY 7TH JULY**

## **Ranger Jamie Visits NWOOSH**

(special visitor)

### **CALLING ALL NATURE EXPLORERS!**

Ranger Jamie is coming to NWOOSH for an immersive Nature Experience focusing on waterworks, building habitats, bug catching & a Ninja Olympic Event!

**Early Bird Rate \$ 88**

**Regular Rate \$ 93**



**FRIDAY 8TH JULY**

## **STEM Play & Device Day**

\*lunch provided

### **THE FUTURE BELONGS TO THE CURIOUS!**

Minecraft slime & STEM play is on the menu! And just for today, children are invited to BYO their own favourite tech devices for supervised collaborative & individual screen play!

**Early Bird Rate \$ 55**

**Regular Rate \$ 60**



# WHAT'S HAPPENING

**MONDAY 11TH JULY**

## **Wheels Day**

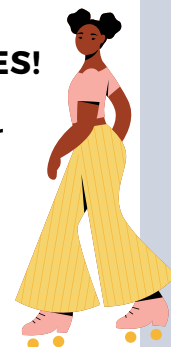
\*lunch provided

**BYO BIKES, SCOOTERS & ROLLERBLADES!**

A popular in-centre day where children can embrace their need for speed on our special NWOOSH based circuits! P.S. Don't forget the safety gear!

**Early Bird Rate \$ 55**

**Regular Rate \$ 60**



**TUESDAY 12TH JULY**

## **Gamerz Truck**

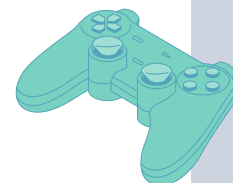
(special visitor)

**BACK BY POPULAR DEMAND, ITS GAME TIME!**

The Gamerz truck is ALWAYS highly requested in our child VC suggestions! Battle it out with mates in a variety of consoles latest games or simply enjoy the retro classics!

**Early Bird Rate \$ 80**

**Regular Rate \$ 85**



**WEDNESDAY 13TH JULY**

## **Ku-ring-gai Wild Flower Garden: Art Adventures**

(excursion)

**ATTENTION: EMERGING & ASPIRING ARTISTS**

Today we are off discovering the beauty of nature, teaming up with the KRG Environmental Education Rangers in this amazing art adventure including clay craft, botanical drawings, bush walking, & a collaborative bush mural!

**Early Bird Rate \$ 90**

**Regular Rate \$ 95**



**THURSDAY 14TH JULY**

## **Winter Festival**

\*lunch provided

**CELEBRATING THE WONDER OF WINTER!**

Jack Frost has arrived & the world around us has embraced its cool change! Let's take the time to welcome in this wonderful wintry season with a festival in its honour!

**Early Bird Rate \$ 55**

**Regular Rate \$ 60**



**FRIDAY 15TH APRIL**

## **Laser Tag**

(special visitor)

**READY AIM LASER FIRE!**

The team from Laser Warriors is BACK by popular demand - come ready to get strapped in for an incredibly immerse play experience!

**Early Bird Rate \$ 80**

**Regular Rate \$ 85**



# WHAT'S HAPPENING

**MONDAY 18TH JULY**

## **Moving Bodies**

**(excursion)**

### **KEEP MOVING, KEEP CLIMBING!**

Time to shake off those back to school blues with our final day of Winter VC at Moving Bodies - Ninja Obstacle courses, Parkour Challenges & Gymnastics are all on the menu so don't miss out!

**Early Bird Rate \$ 94**

**Regular Rate \$ 99**



## FREQUENTLY ASKED QUESTIONS

### **IS FOOD PROVIDED FOR MY CHILD?**

Our Centre provides on a daily basis breakfast, afternoon tea & a late snack to stop those pre-dinner "hangries".

Fresh fruit is also always available through-out the day. We also provide lunch on certain days, these can be identified in the Vacation Care Day descriptions above!

If your child does require additional snack options, we recommend to include these in their lunchboxes!

### **WHAT TIME DO I NEED TO DROP OFF?**

**We strongly recommend dropping off by 8:30 am on every day, so that your child does not miss out on anything!**

Depending on the day's activities planned, there may be transport organised or workshops set to run at specific times by visiting hosts!

**Children are required to be at the NWOOSH Centre by 8:30 AM on EXCURSION days.**

### **WHAT SHOULD BE INCLUDED WHEN PACKING MY CHILD'S VACATION CARE BACKPACK?**

- Hat & Sunglasses (Sun Protective)
- Freshly Filled Water Bottle
- Morning Tea
- Lunch (where it is not provided)
- Additional Snacks
- Raincoat/Umbrella (for rainy days)
- Jumper or Coat (for the cold weather)

Children are also expected to be dressed in closed-in shoes (sneakers are strongly recommended) & sun safe clothing!



**Please make sure to LABEL ALL CLOTHING & BELONGINGS so that if any items are lost we can return them to your child easily!**